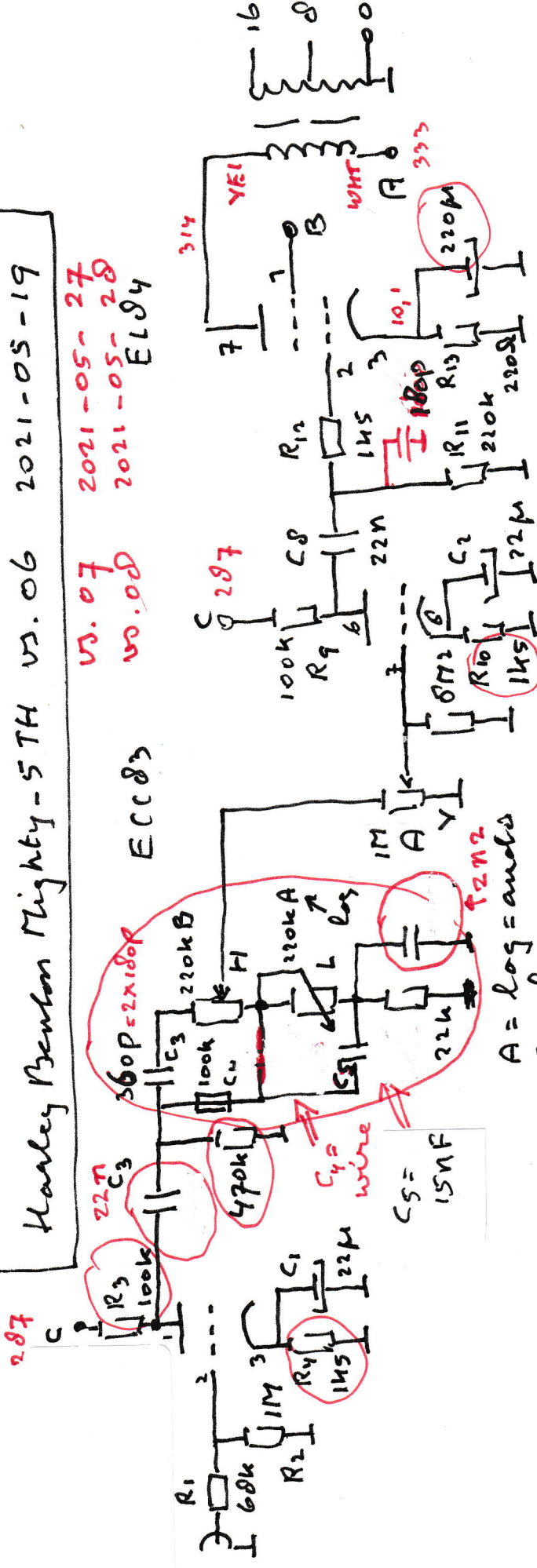


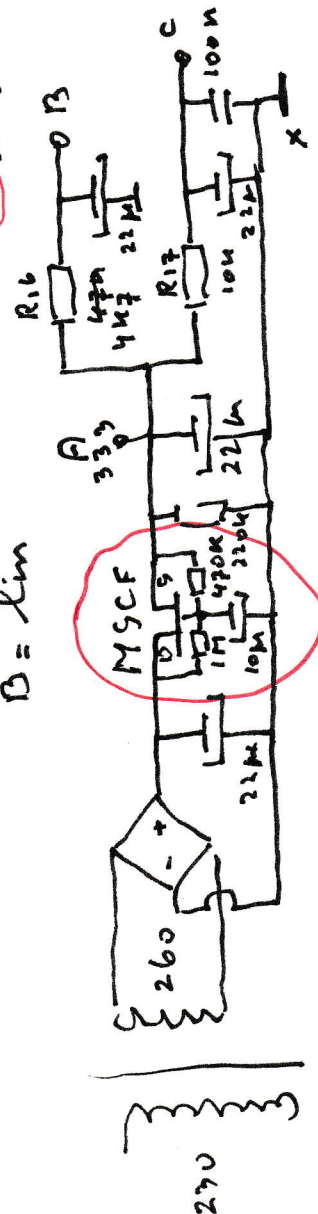
Harley Benton Mighty-5TH vs. 06 2021-05-19

vs. 07 2021-05-27
 vs. 08 2021-05-28
 EL84

ECC83



A = log = anolo
 B = lin



optm: H is nu goed
 L te sloep
 (22k bijstellen?)

vs. 07: H en L beide goed
 vs. 08: C4 = wire
 180p 470p // R11 (22k // 22k)
 C5 = 15n (chip bus)
 C3 = 22n (muip grams)
 over R11 = 220p // 180p

2021-06-02
 Mod's by Vanderveen

